

WR9800 Series

Self-Propelled
Windrowers

HESSTON
by MASSEY FERGUSON

A smarter way to better hay.



Table of Contents

Celebrating 60 Years | 4

Overview | 6

Technology | 10

Performance | 14

Comfort | 18

Headers & Transport | 20

Hay Tools | 28

Value & Financing | 30

Service & Support | 31

Specifications | 32

The WR9800 Series Windrowers.

Now the most advanced windrower in hay is also the easiest to use

Quality hay and grain starts here – with the latest evolution of Hesston® WR9800 series self-propelled windrowers. They bring the industry's most sophisticated technology to the field – making them the easiest, most efficient windrowers to operate, whether you're an experienced hand or a first-timer. The WR9800 series windrowers. Another leap forward, from the company that invented the category.

Seven decades of firsts

For almost 70 years, Hesston has been dedicated to creating innovative products that produce one thing: quality hay. We've been recognized as the self-propelled windrower innovator since 1955. Other industry firsts have included the first hydrostatic windrower, the first center-pivot mower-conditioner and the first big square baler – which had nearly 50 individual patents of its own. No wonder we're the number one choice of hay professionals across North America.



The Hesston WR9800 series windrowers.

Another promise kept. Because that's what we do. Because that's what you need. And because that's what makes all the difference.



Celebrating the 60th anniversary of the first self-propelled swather.

Since our first self-propelled swather rolled into the field 60 years ago, times have changed. So have the windrowers Hesston has produced - all 100,000 of them.

Through the years, we have continuously improved our products to ensure Hesston remains an industry leader in:

- ✦ **Performance**
- ✦ **Efficiency**
- ✦ **Simplicity**
- ✦ **Reliability**

All while working to maximize the profitability of our customers. They're the ones who benefit most from 60 years of Hesston windrower innovation.



Cutting a Wide Swath: Hesston Windrower "Firsts"

- ❖ Self-Propelled Swather
- ❖ Hydrostatic Transmission
- ❖ Hydraulic Header Drive
- ❖ Onboard Electronics
- ❖ Performance Monitoring
- ❖ In-Cab Monitor System
- ❖ On-board Diagnostics and Troubleshooting
- ❖ Fully Integrated Guidance System
- ❖ Electro-Hydraulic Steering
- ❖ Self-Cleaning Cooling System
- ❖ Tier 4 Engine in Windrower
- ❖ Draper Head
- ❖ Sickle Head
- ❖ Disc Head
- ❖ Steel on Steel Conditioners
- ❖ Double Conditioning System (first and only)
- ❖ Hydraulic Roll Tension
- ❖ Turbulence Reduction Roll
- ❖ Shiftable Decks
- ❖ Smart Draper Head Technology



WR9800 Series

Where state-of-the-art meets user-friendly.

No other windrower can produce Hesston™ Hay, because no other windrower offers this exclusive combination of more than a dozen hi-tech advances, developed in direct response to input from working hay producers.

Auto-Guide® 3000

The most advanced GPS steering available, with field speeds up to 17.5 mph.

HYDRO HANDLE

Fully programmable, to match your needs.

FIELDMAX™ MONITOR

Controls virtually every windrower function, using advanced operational software.

TRUE ELECTRO-HYDRAULIC STEERING

A more precise, responsive, adjustable system.

SEMI-ACTIVE AIR SUSPENSION SEAT

Reads and adjusts to field conditions, reducing operator fatigue.

INDEPENDENT HEADER FLOTATION

For unprecedented flexibility and control.

REMOTE CENTER LINK SWITCH

Ground level adjustment for quicker, easier changing of heads.

OPTIONAL REARSTEER

This top-of-the-line option gives you steady steering and driver comfort at speeds of up to 20 miles per hour.





CAB SUSPENSION

A better way to handle borders, pivots and the roughest field conditions.

AGCO POWER™ TIER IV ENGINES

Now with more horsepower, more torque and road speeds up to 24.5mph with RearSteer.

DEF TANK AND TOOLBOX LOCATION*

For better crop clearance, especially in canola.
**Actual relocation not shown in picture*

V-COOL™ COOLING SYSTEM

With an auto-reverse fan that eliminates the need for rotary screen cleaners.

GLIDERIDER™ REAR AXLE SUSPENSION

An adjustment-free system that assures smooth stability and far less bounce.

EXTRA LADDER STEP

Plus a larger platform, for easier entry and exit.

**EXCLUSIVE TWINMAX™
ADVANCED CONDITIONING**

Double crimping vs. crushing, combined with our low-profile RazorBar™, cutter bar for faster drying, quality hay.

5300 DynaSwath DRAPER HEAD

More robust design with dual sickle drive and sizes from 20' to 40'.



Three ways to go. And go.

There's nothing like knowing you've got just the right tools for the job. And once you run these WR9800 series windrowers, you'll see why there's nothing like a Hesston.





Model	Engine	Rated HP	Boost HP	Headers
WR9870	AGCO Power™ 6.6L	225	240	Disc, Draper, Auger
WR9860	AGCO Power™ 4.9L QuadBoost™	195	208	Disc, Draper, Auger
WR9840	AGCO Power™ 4.4L	137	148	Draper, Auger

See complete specs on page 32.



Technology so smart, it practically windrows for you.

Hesston was the first in the industry to operate all main functions by means of a virtual terminal. No other self-propelled windrower helps you produce quality hay faster, more efficiently, with greater precision, less fatigue, better fuel economy and lower operating costs.

Brains of the FieldMax

WR Series on-board terminal, FieldMax, lets you control all of the windrower's main functions, including:

- ✧ Header speed
- ✧ Header load monitor
- ✧ L/R header flotation/tilt/height
- ✧ Automatic control engagement
- ✧ One touch down/one touch up
- ✧ Return to height
- ✧ FNR handle configurations
- ✧ Auto-Guide™ 3000
- ✧ Steering system adjustments
- ✧ Data collection (fuel usage, acres, hours, etc.)
- ✧ Trouble shooting information



Let the windrower do the work

A windrower so smart, it talks to itself. Proprietary software on the WR Series allows a variety of components to communicate electronically and execute many of its functions automatically. These components include:

- ✦ Electro-Hydraulic Steering
- ✦ Auto-Steering
- ✦ V-Cool Cooling System
- ✦ Automatic Header Speed
- ✦ Automatic Reel Speed
- ✦ Automatic Header Float
- ✦ Auto Load Control
- ✦ OptiCruise Speed Control

Rotary Header Speed Compensation

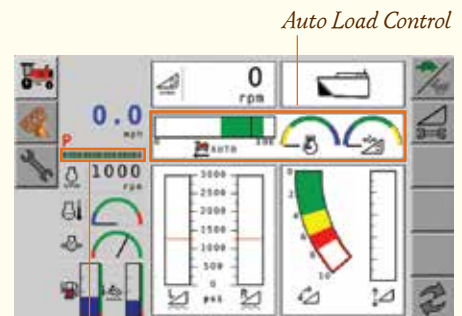
Rotary Header Speed Compensation automatically compensates for different field conditions – the system will adjust to maintain proper cut quality and head power efficiency.

OptiCruise

The OptiCruise function allows for more precise speed control when operating in rough conditions. The two buttons on the back of the new hydro handle allow you to increase and decrease your speed smoothly (0.6 mph increments in 1st & 2nd speed range, 2 mph in 3rd speed range) without having to move the control handle.

Auto Load Control

This feature automatically adjusts your ground speed based on the engine load and the header drive pressure to ensure maximum torque and efficient fuel usage. The load control on the monitor will give you instant feedback to what levels the windrower is performing.



OptiCruise



Maximize operational uptime with Fuse® Connected Services enabled by AgCommand®

Fuse Connected Services from your Hesston dealer means a new level of proactive equipment and operational support to improve efficiency and productivity.

Enabled by AgCommand, AGCO's industry-leading telemetry tool, Fuse Connected Services helps optimize performance through enhanced management of your fleet and individual assets. Eliminate guesswork with pre-populated service and maintenance intervals for each machine and utilize machine performance analytics, prioritized alerts and theft recovery to minimize downtime – all by wireless communication via web and mobile platforms for easy access to data.

Learn more at www.AGCOtechnologies.com

For current product set-up, operation and calibration questions, call 1-(877) 525-4384.



Be in full control.

Our electro-hydraulic drive system and auto-steering make operating and controlling your windrower easier than ever.

Header Control

With our, innovative, hydraulic drive system and fully programmable hydro handle, the WR Series makes operating your header a breeze. The Field-Max monitor is highly advanced but simple-to-use for on-the-fly header adjustments.

Steering Control

Another Hesston exclusive, the responsive, electro-hydraulic steering system is the ultimate in precision control. Now you can drive at faster speeds – up to 24.5mph when equipped with RearSteer – with enhanced stability. You can adjust the steering wheel response and resistance to your personal preferences.

Hydro Handle

With three set functions and up to 16 programmable functions that can be specific to your operations – you have everything you need at your fingertips.

Or go hands free

Auto-Steering with Auto-Guide 3000

Be in full control or go hands-free with Auto-Guide 3000, the world's most advanced auto-steering. Its satellite-assisted steering technology gives complete and automatic guidance capabilities, allowing you to use the full width of your header for tighter rows and less overlap, which results in less time and fuel.

Field speeds up to 17.5 mph - with extreme accuracy. Our steering and guidance system allows for some of the fastest auto-guided field speeds in the industry.

Just plug & play - since all WR9800 series windrowers are pre-wired to use Auto-Guide 3000 it can communicate directly with our electro-hydraulic steering, eliminating the need for additional steering hardware. The response time is drastically reduced providing a much higher degree of steering accuracy.

Easy to operate - when Auto-Guide 3000 is engaged, the GPS signal replaces the signal from the steering wheel. If the steering wheel is moved by hand, the windrower automatically goes back to manual steering.

A handle configuration icon in the FieldMax Monitor will always be visible, so you can view and/or change handle settings with a single button.



Auto-Guide 3000

Header Up/Down

OptiCruise
(Back of handle)





Power. Torque. And total fluid economy.

Built especially for ag and specifically for this windrower, our AGCO Power engines on the WR9800 series windrowers can deliver as much as 225 Standard HP at 2,100 RPM, while power boosting to as high as 240 Boost HP at 1,900 RPM. This means that if you begin to pull down on the engine, the power boost will engage to give you the torque and horsepower you need to keep you going in the field. This purposeful engineering, along with advanced emission control guarantee, will also provide you consistently lower total fluid consumption – for both diesel and DEF.



Stable torque at any load

Simply put, our 4-cylinder QuadBoost™ engine thinks it's a six, because it features higher power density than other 4-cylinders. It supplies more air to the valves to increase torque output, maintain high torque at field rpm levels and generate real fuel savings.

17.5 mph working speed and up to 24.5 mph transport speeds with RearSteer

Our advanced drive control system pumps more hydraulic fluid in the field ranges to provide higher torque and speeds up to 17.5 mph. On the road, less flow is delivered, to increase RPM for transport speeds up to 24.5mph with RearSteer. All to keep you safe and stable.



Higher power density in our QuadBoost engine simply means it provides more power from the same engine volume.

QuadBOOST™
TECHNOLOGY







V-Cool. Very cool.

Even the cooling package on the WR9800 Series is smarter. All radiator and cooling units in the system are arranged in a V-shape so air flows unrestricted to each unit, instead of being forced through multiple stacked radiators. Engine air intake is pulled from behind the hood, promoting longer filter life and better performance.

A fan that'll blow you away

Far more efficient than ordinary rotary screen cleaners, our hydraulically driven fan runs at variable speeds, to match the cooling needs of the engine. It also auto-reverses, to automatically clean the radiators and fan screen as you work, keeping the engine running at optimum temperature and saving time and fuel.

More acres per gallon

With some of the best fuel-efficiency in the industry and a 130-gallon fuel tank, the WR Series allows you to mow all day without refueling. And our exclusive Hesston Fuel Economy Meter lets you make adjustments to maximize fuel usage all along the way. For instance, you could run at 17.5 mph, but optimal fuel savings might be at 12.5 mph.

Low maintenance Tier IV Emission control

Our 3rd generation SCR/cEGR technology saves you more on DEF and diesel fuel across the board. And unlike the competition, there's no Diesel Particulate Filter (DPF) to be cleaned or replaced. The whole system saves you time and money, while helping your engine run better, stay cooler and last longer.



The ride you've been waiting for.

We didn't maximize the creature comforts in our WR9800 series windrowers. You did. Because every feature and every improvement has been added in response to what hay producers have told us they need to increase efficiency and reduce fatigue.

A complete machine suspension package

The WR9800 Series offers you better suspension, back to front – starting with a solution to the common problem of rear end shock and bucking.

Adjustment-free rear axle suspension

With two gas shocks and a spring in the center of the axle, our GlideRider™ rear axle suspension transfers load to the main frame, so bounce is reduced and comfort is increased – even at higher field speeds.

Large radial tires

We offer two radial tire options on the WR Series for improved traction, increased flotation and a better ride.



Enhanced cab suspension

With pressure settings from 15 to 35 psi, our optional cab suspension system provides a ride similar to that of a tractor cab – a real plus when you're operating on pivots, borders or conditions involving dips, ruts, or ditches.

A unique, deluxe semi-active air suspension seat

It takes constant, split-second readings of field conditions and adjusts its suspension instantaneously, to reduce bounce. It also keeps you cooler or warmer as needed and enfolds you like a sports car seat – just to help you stay put.

A quieter cab that speaks volumes

Our lower-decibel Tier 4 engines, quieter hydraulics, added sound-deadening material all make the cab quieter and you happier in your workplace. But that's just the beginning.

Hands-on convenience

In the midst of all that peace and quiet, you'll notice real ergonomic improvements, like optional automatic climate control, an upgraded, more intuitive side console and a steering column with a greater choice of steering wheel positions and adjustments.



A game changer in draper heads.

Introducing the Hesston 5300 DynaSwath draper head. Along with its robust new dual sickle design that can withstand heavier crop loads, it features Smart Head Technology, with its own electronic control unit – in other words, it has its own brains on board – to communicate efficiently with the windrower and allow for auto reel speed.

Other significant advances include:

- ✦ New, improved hydraulic system with single point header hook-up and drives for all major functions
- ✦ Bigger reel tine tube size and new cam track design
- ✦ Optional slow speed transport kit
- ✦ New, 35' and 40' reel with truss rod support



Durable tines with the improved ability to withstand crop bend without breaking.



The new 5300 draper head also features forged and double heat-treated range guards with longer tangs.



RearSteer option revs up ride stability.

Think of the time and effort you'd save by towing your draper head behind your windrower. Imagine greater control with added drive power up front. Now say hello to RearSteer, the Hesston exclusive that will totally change your driving experience.

Take your draper head along at speeds up to 20 miles per hour. You can tow it without a header cart when equipped with the slow speed transport kit.





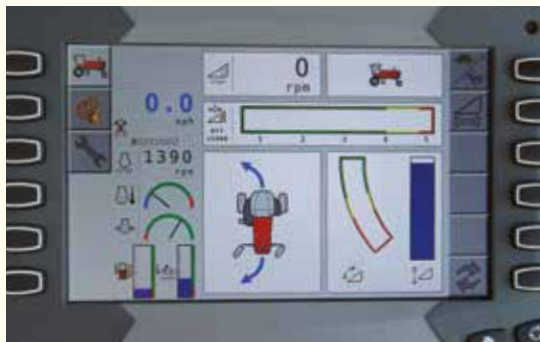
An SP Windrower with combine-style steering



Using fully active hydraulic cylinders for true rear steering, this top-of-the-line option gives you steady steering and driver comfort at much higher speeds.



Engage and go



Just use your monitor software to engage RearSteer right from your cab, and you're ready to roll.

Hit the road



Hit the road at up to 24.5 mph without a header, additional ballast, cab or rear axle adjustments — and be in complete control.

Disc headers designed to make hay pay.

The Hesston 9183, 9186, 9195 and 9196 disc headers, with our industry-exclusive low-profile RazorBar™ cutterbar, let you increase your acres per hour while achieving a closer, cleaner cut.

Higher tooth-to-tooth gear contact in the RazorBar™ delivers more power, so we can handle higher loads. But if repair is ever required, the modular design allows each gear assembly and idler gear to be individually removed without taking the whole cutterbar apart.

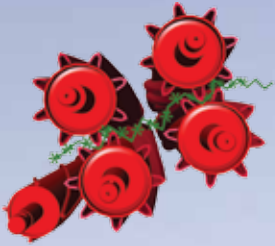
✦ Infinitely variable disc speed, from 1,000 to 2,500 RPM, to match any crop conditions.

✦ Hydraulic conditioner roll tension

✦ Standard or TwinMax Advanced Conditioning

Dual hydraulic motors drive the cutterbed from each end to provide even torque load across the entire width of the cutterbar for increased reliability.

Our 13-foot and 16-foot RazorBar cutterbars feature a low profile, spur gear cutterbed that slices through lush alfalfa, tangled grass, and tall Sudan with ease.



The herringbone pattern on the rolls creates a broad, well-formed, level windrow that dries faster, more evenly, and rakes together more easily for better baling.



Exclusive TwinMax Advanced Conditioning

Only Hesston offers this ingenious system that double crimps the stems, reducing drying time while allowing the leaves to stay healthy and whole, retaining their vital nutrients. The result is Hesston Hay – a higher quality crop that earns you a higher price on every bale.

Crimp vs. Crush

Competitive windrowers still feature conditioning systems that crush both the stems and the leaves to accelerate drying time. But damaging the leaves means lost nutrients, lesser quality hay and lower market value.

The only thing we crush is the competition

Instead of just a single set of conditioning rollers with no gap between them, TwinMax uses two sets of steel-on-steel conditioning rolls, finely tuned to maintain a roll gap for varying crop conditions. The crop feeds into the first set of rollers, where stems are crimped every two to three inches while leaves pass through unharmed. It then passes through the second set, where the stems are crimped again, achieving a stem crimp of one to two inches.



A low-profile, spur gear cutterbed that's thinner in design means closer cutting.



The top of the heap in sickle bar headers.



Leave it to the brand that invented the auger header to provide the smooth, clean cut you demand. Available in 14-, 16- and 18-foot widths, the 9126 from Hesston features our dual augers, along with a double sickle and a single pair of rubber-on-steel or steel-on-steel conditioner rolls.

The 9146 model, available in 14- and 16-foot cutting widths, boasts our exclusive TwinMax Advanced Conditioning System. All models feature hydraulic drive, hydraulic header flotation, and hydraulic roll tension for easy adjustment and time-tested reliability.

- ✦ Our hydraulic roll tensioning system maintains consistent conditioner roll pressure for effective crimping and the highest quality hay.
- ✦ Sickle sections are bolted to the sickle bar, rather than riveted, for quicker, easier field replacement.

Unlike the competition, we use a dual auger system that includes one floating auger – a sure fire method to convey both light and heavy crops more gently and smoothly, consistently laying them in uniform windrows with little or no adjustment.

Independent header flotation

Our Independent Flotation Header lets you adjust each lift arm independently and on-the-go, making it easier to cut over irrigation borders and center pivot irrigation tracks. It also reduces overall machine weight to minimize compaction and lets you cut closer without gouging the ground.





Hay or harvest, we have the solution.

Hesston brought the very first commercially viable windrower to the industry. But our expertise doesn't end there. Because we've got the answer to all your hay and harvesting needs – with a little help from our friends at Massey Ferguson.

Large Square Balers



2200 Series Large Square Balers
Capacity, consistency and increased bale density.

Commercial Round Balers



2900 Series Round Balers
The new standard in efficiency, productivity and a job well done.

Rakes



5130 Wheel Rake
Heavy-duty. Commercial grade.



RK Series Rotary Rakes
Rugged construction and a gentle touch.



SV Series Super V + Y Rakes
25.0' - 34.5' Raking Widths
The jack-of-all-trades rakes.



1500 Series Vertical Fold Rakes
16' - 24' Raking Width
Rugged and affordable.

Massey
Ferguson
Harvest
Solutions



1700 Series Economy Round Balers
Professional-grade. Practical price.



3900 Series Wheel Rakes
40 strong teeth per wheel for cleaner fields and longer service life.

Self-Propelled Windrowers



WR9800 Series windrower with 5300 DynaSwath draper head. *Smarter. Easier. Faster.*

Axial Combines



MF9505 combine
The next generation of Massey combines.

Invest wisely.

Hesston has built a worldwide following by building machines that last. We go the extra mile right from the start so our windrowers go the extra mile for years to come.

Best of all if you ever decide to trade in your Hesston windrower, the resale values are among the highest in the industry. That's because they come with a built-in reputation for durability. And they come from a brand that has served farmers for almost 70 years.

LOW-RATE, FLEXIBLE FINANCING

Your Hesston Dealer and AGCO Finance offer attractive financing programs to ensure your new WR9800 Series windrower will fit your operating budget. Extremely competitive rates and terms make it easy to purchase, lease or rent.



We're always at your service.

Our network of dealers understands what owning a WR9800 is really all about. They'll advise and support you through the selection process, the buying process, operation, maintenance and beyond.

Even our warranty is high-performance

We'll cover you for two years/2,000 hours on engines and one year/parts and labor. It's one of the best warranties in the business.

Quality parts

Genuine AGCO replacement parts are manufactured to the same high standards of quality and dependability as the original part used on the assembly line. Using original equipment parts will help keep your Hesston WR9800 Series windrower running like new.

*At Hesston, you're family.
And there's nothing we
wouldn't do for family.*



Questions? Go to Hesston.com

Our website opens the door to all sorts of technical information, corporate support, and product specifications. Visit the site today to see our full line of hay making products. Even build and price your own machine.

Merchandise and Gifts

ShopHesstonGear.com is your one-stop source for Hesston and Team Hesston logoed products, including hats, apparel, seasonal items, gifts and our collectable WNFR belt buckles.



AGCO Answers

(877) 525-4384 | agcoanswers@agcocorp.com

At AGCO, customer care isn't just a department. It's a commitment. Contact us with your questions. We'll do our best to answer them promptly, or put you in touch with someone who can.

Ride with us.



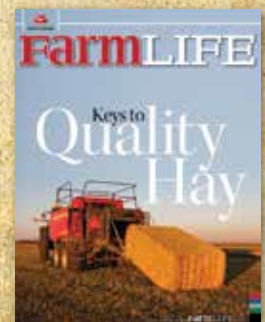
#TeamHesston



Team Hesston Rodeo

Hesston has been an important part of Professional Rodeo since 1975. Team Hesston Rodeo was formed in 2013 to further expand Hesston's support of the top cowboys and cowgirls in ProRodeo. Follow them as they blaze their way to Las Vegas for the WNFR. They have world championships in their sights and the power of Hesston machinery and hay behind them. Join Team Hesston rodeo and be part of the new world championship machine. Hesston is the official farm equipment sponsor of the PRCA.

Enjoy our exclusive publication that offers insights into all the joys—and challenges—of rural life. Go to myfarmlife.com to learn more.



SP WINDROWER MODEL	WR9870	WR9860	WR9840
Dimensions and Weight			
Length overall w/out header in. (mm)	199.7 (5,074)		
Wheelbase in. (mm)	137 (3,482)		
Height - top of cab in. (mm) (23.1-26 Turf Tires)	137.8 (3,501)		
Tread width drive tires in. (mm)	130.7 (3,320)		
Tread width tail wheels min. in. (mm)	84 to 129 in 9" increments (2,135 to 3,277)		
Weight (approximate) w/out header lbs. (kg)	11,420 (5,180)	11,305 (5,127)	11,250 (5,103)
Speed (approximate)			
Field range mph (km/h)	0 to 17.5 (0 to 28)		
Road range mph (km/h)	0 to 22 (0 to 35)		
Road range w/RearSteer mph (km/h) (optional)	0 to 24.5 (0 to 39)		
Engine			
Model	AGCO Power™ 66 CTA T4F	AGCO Power™ 49 CTA T4F	AGCO Power™ 44 CTA T4F
Rated Horsepower (kW)	225 (168)	195 (145)	137 (103)
Boost Horsepower (kW)	240 (179)	208 (155)	148 (110)
Displacement cu in. (L)	403 (6.6)	299 (4.9)	269 (4.4)
Fuel tank capacity US GAL (L)	130 (492)		
Ground Drive System			
Type	Double planetary gear reduction		
Tandem pump	Sauer Danfoss H1 Axial Piston Pump		
Motors	Infinitely variable displacement		
Flotation System			
Type	Hydraulic with independent left/right adjustable computer control		
Tires			
Drive wheels	23.1-26 Bias Turf (R3), 23.1-26 Radial Turf (R3), 620/75R26 Radial Bar (R1)		
Tail wheels	14L-16.1, 8-ply implement rib, 16.5L-16.1, 10-ply implement rib		

DRAPER HEADER MODEL 5300	6.1M (20 FT)	7.6M (25 FT)	9.1M (30 FT)	10.7M (35 FT)	12.2M (40 FT)
Header Specifications					
Drive	Hydraulic				
Header angle	4 to 18 degrees				
Flotation	Hydraulic (on tractor)				
Draper opening in. (m)	78.5 (2)				
Dimensions and Weights					
Width, overall	21 ft. 5 in. (6,536 mm)	26 ft. 5 in. (8,060 mm)	31 ft. 5 in. (9,584 mm)	36 ft. 5 in. (11,108 mm)	41 ft. 5 in. (12,632 mm)
Width, cutting	19 ft. 9 in. (6,023 mm)	24 ft. 9 in. (7,547 mm)	29 ft. 9 in. (9,071 mm)	34 ft. 9 in. (10,595 mm)	39 ft. 9 in. (12,119 mm)
Weight, with reel	3,800 lbs. (1,720 kg)	4,400 lbs. (2,000 kg)	5,000 lbs. (2,270 kg)	5,600 lbs. (2,540 kg)	6,200 lbs. (2,810 kg)
Delivery style	Center	Center or Side			
Sickle Specifications					
Speed, single sickle	–	1,300 spm		–	–
Speed, double sickle	1,470 spm				
Stroke	3,331 in. (84.6 mm)				
Drive	Inline gearbox				
Guard spacing	3 in. (76 mm)				

SICKLE HEADER MODEL	9126	9146
Dimensions and Weight		
14' (4.3) Header		
Width of cut in. (mm)	168 (4,276)	168 (4,276)
Width (overall) in. (mm)	188.4 (4,786)	188.4 (4,786)
Weight (less forming shields) lbs. (kg)	3,850 (1,746)	4,940 (2,240)
16' (4.3m) Header		
Width of cut in. (mm)	192 (4,877)	192 (4,877)
Width (overall) in. (mm)	212.4 (6,005)	212.4 (6,005)
Weight (less forming shields) lbs. (kg)	4,100 (1,860)	5,210 (2,363)
18' (5.5m) Header		
Width of cut in. (mm)	216 (5,486)	N/A
Width (overall) in. (mm)	236.4 (6,005)	N/A
Weight (less forming shields) lbs. (kg)	4,400 (1,996)	N/A
Header		
Header drive	Hydraulic	
Header flotation	Hydraulic adjustable	
Reel		
Bats	5	
Diameter in. (mm)	42 (1,067)	
Drive	Belt & chain	
Speed RPM	72 - 83	
Sickle		
Speed spm (cpm)	1,840 (920)	
Stroke in. (mm)	3 (76.2)	
Guard angle (adjustable)	5° to 12°	
Drive	Timed gearboxes	
Number of sickles	2	
Augers		
Type	Dual, opposed rotation	
Upper auger diameter in. (mm)	9 (229)	
Lower auger diameter in. (mm)	10 (254)	
Upper auger speed RPM	368	
Lower auger speed RPM	585	
Hay Conditioner		
Type	Rubber on Steel, Steel-on-steel	Herringbone, Steel-on-steel
Conditioner rolls	2	4
Length in. (mm)	110 (2,794)	
Steel diameter in. (mm)	7.75 (197)	
Rubber diameter in. (mm)	8 (203)	
Speed - max. RPM	1,026	
Min. windrow width in. (mm)	40 (1,016)	
Max. windrow width in. (mm)	96 (2,438)	

RAZORBAR DISC HEADER MODEL	MF9183	MF9186	MF9195	MF9196
Dimensions and Weight				
Width (overall) in. (mm)	159 (4,039)		195 (4,963)	
Weight (with forming shields) lbs. (kg)	4,025 (1,825)		4,780 (2,168)	
Header				
Header drive	Dual hydraulic motors			
Input shaft speed - max. RPM	2,600			
Header flotation	Hydraulic, adjustable from cab			
Header tilt	0° to 10°			
Cutterbed				
Cutting width in. (mm)	156 (3,962)		192 (4,895)	
Cutting height in. (mm)	.75 to 3 (19 to 76)			
Number of discs	8		10	
Number of knives	16		20	
Disc speed - max. RPM	2,500			
Tip speed - max. mph (km/h)	189 (304)			
Cutterbed design	Modular spur gears			
Cutterbed oil capacity qt (L)	6 (5.7)			
Knives	18 degree bottom bevel			
Knife circle diameter in. (mm)	24.5 (622)			
Knife tip speed mph (kph)	189 (304)			
Hay Conditioner				
Type	Herringbone, Steel-on-steel			
Conditioner rolls	2	4	2	4
Length in. (mm)	110 (2,794)			
Steel diameter in. (mm)	7.75 (197)			
Speed - max. RPM	1,290			
Min. windrow width in. (mm)	40 (1,016)			
Max. windrow width in. (mm)	96 (2,438)			
Roll tension adjustment	Hydraulic with accumulator			

©2015 AGCO Corporation. All rights reserved. This document and all of its contents are owned exclusively by AGCO and are protected by copyright law. AGCO has a corporate policy of continuous product improvement and development; therefore, specifications are subject to change without any advance notice. AGCO is not responsible for differences between the specifications or illustrations contained in this publication and the actual equipment. Equipment produced by other manufacturers is shown in photographs in this brochure for the purpose of illustration only and is not intended as an endorsement of that particular equipment or its suitability. All rights reserved. AGCO, 4205 River Green Parkway, Duluth, GA 30096.

We proudly support:



It's everything you could ask for.



Because that is just what you did. You spoke. We listened. And every innovation in our WR9800 Series was inspired by producers like you. Maybe that's why these windrowers go far beyond simply "measuring up" to the competition. The WR9800 Series. Leading-edge. State-of-the-art. Red-hot. Top-of-the-line. There just aren't enough hyphens to describe it. Find out more at your local dealership or visit Hesston.com.





Welcome to the family.

HESSTON
by MASSEY FERGUSON

Go to www.Hesston.com to learn more



HESSTON
by MASSEY FERGUSON

AGCO, Your Agriculture Company, is a premier manufacturer of agricultural equipment, providing high-tech solutions for professional farmers feeding the world. The company is dedicated to delivering superior customer service, innovation and quality. AGCO products are distributed in more than 140 countries worldwide.



HESSTON and MASSEY FERGUSON are registered trademarks of AGCO. Auto Guide and Fuse are registered trademarks of AGCO. Fieldmax, V-Cool, RazorBar, TwinMax, OptiCruise, Quad Boost, and AGCO Power are registered trademarks of AGCO.

© 2015 AGCO Corporation (877) 525-4384 HS15B002VP (08) 3 PD