

# McCormick Tractors

## North America Product Lineup



[www.McCormickNA.com](http://www.McCormickNA.com)



## McCormick's Mission:

"We want to be among the leaders, and one of the world's most important players in the agricultural designing, manufacturing and marketing business. Our strength lies in the experience of a long tradition, the foundation on which our skills and innovative acumen are based. And that now allows us to offer a technologically pioneering product, plus an excellent service, able to facilitate the work of our end customers and make it increasingly more profitable."

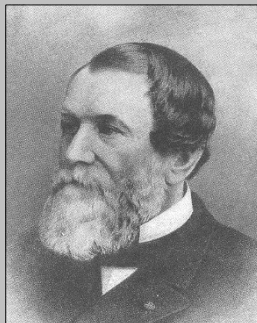


## The McCormick Story:

Quality, innovation, performance and reliability. These were the key principles established by Cyrus McCormick back in 1831 when he reinvented agriculture. Today, farmers expect nothing less, and McCormick continues to deliver after more than 180 years.

**1831:** Cyrus McCormick invents the first mechanical reaper and demonstrates it on a Virginia farm. Patent is issued for the design in 1834.

**1849:** The McCormick brand is first introduced on reapers made in McCormick's factory in Chicago.

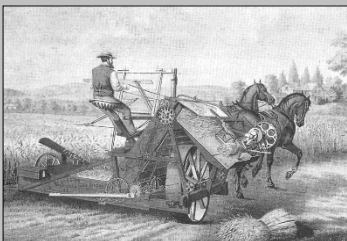


**1936:** McCormick tractors are painted red for the first time, replacing the familiar gray color.

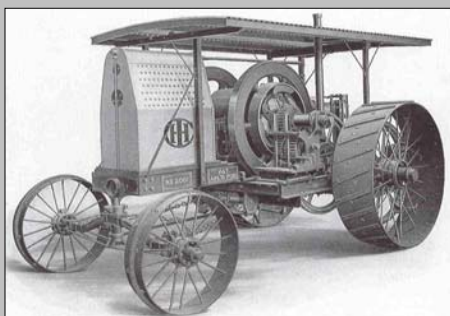
**1938:** McCormick opens facility in Doncaster, England. First production of implements begins soon after.

**1951:** The first McCormick tractor rolls off the Doncaster assembly line.

**1985:** The McCormick brand, under IHC, is purchased by J.I. Case Company.



**1902:** Cyrus McCormick, Jr. joins with several other leading equipment manufacturers to form International Harvester.



**1906:** The first McCormick tractor is introduced. The McCormick is often considered the tractor that industrialized the United States.



**2000:** The Argo Group buys the Doncaster Works assets from Case Corp. McCormick tractors enter the North America market in late 2001.



# TTX Series

| Model  | Engine/PTO HP (kW)    | Configuration |
|--------|-----------------------|---------------|
| TTX230 | 225 (165) / 198 (148) | 4wd, Cab      |

**Engine** - BETAPOWER 6.7 liter, 6-cylinder diesel in heavy cast steel front frame; turbocharged and intercooled with common rail direct fuel injection; electronic engine management.

**Transmission** - 'XtraSpeed' 32x24 power shuttle; 8-speed power shift; 4 ranges with right hand shift lever; rear bar axle.

**Hydraulics** - Closed center PFC system; variable displacement pump delivering up to 43 gpm (162 lpm) total system flow; 4 rear remote valves with 3 mechanical control and 1 electronic control.

**3-point Hitch** - Category 3; up to 24,100 lbs (10930 kg) lift capacity; electronic operation.

**PTO** - 540/1000 PTO speeds; easy change shaft; push button control.

**Features** - Large 4-post cab; deluxe air-ride seat; electronic 4wd and differential lock; 4-wheel braking capability; tilt and telescopic steering wheel.



# X7 Series

| Model  | Engine/PTO HP (Kw)    | Configuration |
|--------|-----------------------|---------------|
| X7.440 | 143 (105) / 115 (86)  | 4wd, Cab      |
| X7.450 | 160 (118) / 132 (98)  | 4wd, Cab      |
| X7.650 | 160 (118) / 132 (98)  | 4wd, Cab      |
| X7.660 | 175 (129) / 147 (109) | 4wd, Cab      |
| X7.670 | 192 (141) / 157 (117) | 4wd, Cab      |
| X7.680 | 212 (156) / 181 (135) | 4wd, Cab      |

**Engine** - BETAPOWER 4.5 liter 4-cylinder or 6.7 liter 6-cylinder diesel; high sustained torque at low engine RPM; emissions compliant using advanced SCR technology.

**Transmission** - ProDrive 24x24 power shift and power shuttle, fully automated; or VT-Drive continuously variable transmission (CVT); 32 mph (50 kph) transport speed available.

**Hydraulics** - High performance closed center PFC system; variable displacement pump delivering up to 32.5 gpm (123 lpm) to implements and loader.

**3-point Hitch** - Category 3; up to 20,500 lbs (9300 kg) lift.

**PTO** - 540/540e/1000/1000e; push button control.

**Features** - Standard and premium configurations; large 4-post cab; deluxe air-ride seat; ISO BUS capable; available 12" color touch-screen display, cab and front axle suspension.





# X6L Series

| Model  | Engine/PTO HP (kW)    | Configuration |
|--------|-----------------------|---------------|
| X6.460 | 143 (105) / 117 (87)  | 4wd, Cab      |
| X6.470 | 163 (120) / 137 (102) | 4wd, Cab      |

**Engine** - BETAPOWER 4.5 liter, 4-cylinder diesel; structural block design; turbocharged and intercooled; electronic engine management; emissions compliant using advanced SCR technology.

**Transmission** - 18-speed base gear box with 6 gears and 3 ranges; hydraulic power shuttle; 3-speed push-button shift; available creeper.

**Hydraulics** - Open center system; separate steering and implement pumps; up to 23 gpm (87 lpm) flow dedicated to remote valves and hitch; up to 5 rear remote valves.

**3-point Hitch** - Category 2/3; up to 18,480 lbs (8400 kg) lift capacity; electronic operation; rear fender controls.

**PTO** - 540/1000 PTO speeds; push button control; easy change shaft; rear fender controls, ground speed PTO.

**Features** - Large 4-post cab; air-ride seat; electronic 4wd; fully locking front and rear differentials, integrated front axle brakes.



# X6 Series

| Model  | Engine/PTO HP (kW)   | Configuration |
|--------|----------------------|---------------|
| X6.420 | 121 (89) / 109 (81)  | 4wd, Cab      |
| X6.430 | 133 (98) / 121 (89)  | 4wd, Cab      |
| X6.440 | 140 (103) / 128 (95) | 4wd, Cab      |

**Engine** - BETAPOWER 4.5 liter 4-cylinder diesel; structural block design; turbocharged and intercooled; electronic engine management; emissions compliant using advanced SCR technology.

**Transmission** - 36x12 with 4 gears and 3 ranges; hydraulic power shuttle; 3-speed power shift; available creeper.

**Hydraulics** - Choice of: open center system with 10 gpm (38 lpm) to steering + 17.4 gpm (66 lpm) to implements; or closed center system with 10 gpm (38 lpm) to steering + 29 gpm (110 lpm) to implements (closed center hydraulics only in X6.440). Up to 5 rear remote valves available.

**3-point Hitch** - Category 2; electronic hitch control; 11,900 lbs (5400 kg) lift capacity; rear fender controls.

**PTO** - 540/1000 PTO speeds; push button control; easy change shaft; rear fender controls.

**Features** - Large 4-post cab; air-ride seat; electronic 4wd; fully locking front and rear differentials, integrated front axle brakes.





# X5 Series

| Model | Engine/PTO HP (kW)   | Configuration |
|-------|----------------------|---------------|
| X5.30 | 95 (70) / 81.5 (60)  | 4wd, ROPS/Cab |
| X5.40 | 105 (77) / 88.5 (65) | 4wd, ROPS/Cab |
| X5.50 | 113 (83) / 97.5 (72) | 4wd, ROPS/Cab |

**Engine** - Perkins® 3.4 liter, 4-cylinder clean diesel; structural block design; turbocharged and intercooled; common rail direct fuel injection; electronic engine management.

**Transmission** - 12x12 shuttle with 4 gears and 3 ranges; mechanical synchro shuttle or hydraulic power shuttle; available 3-speed power shift and creeper; 25 mph (40 kph) capable.

**Hydraulics** - Open center system; separate steering and implement pumps; up to 16.6 gpm (62.8 lpm) flow dedicated to remote valves and hitch; up to 4 rear remote valves.

**3-point Hitch** - Category 2; up to 10,450 lbs (4740 kg) lift capacity; mechanical or electronic operation.

**PTO** - 540/1000 rear PTO speeds; hydraulic PTO with push button control; easy change shaft; rear fender controls.

**Features** - Large 4-post cab with true flat deck; air-ride seat; electronic 4wd; fully locking front and rear differentials, integrated front axle brakes; available ROPS configuration.



# X4 Series

| Model | Engine/PTO HP (kW) | Configuration   |
|-------|--------------------|-----------------|
| X4.20 | 64 (47) / 54 (40)  | 2/4wd, ROPS/Cab |
| X4.30 | 72 (53) / 61 (45)  | 2/4wd, ROPS/Cab |
| X4.40 | 79 (58) / 68 (50)  | 2/4wd, ROPS/Cab |
| X4.50 | 90 (66) / 76 (56)  | 2/4wd, ROPS/Cab |
| X4.60 | 99 (73) / 85 (63)  | 2/4wd, ROPS/Cab |
| X4.70 | 107 (79) / 93 (69) | 2/4wd, ROPS/Cab |

**Engine** - Deutz® 2.9 liter or 3.6 liter 4-cylinder diesel; liquid cooled; turbocharged and intercooled; common rail direct fuel injection; electronic engine management; emissions compliant using a “No Maintenance” emissions system.

**Transmission** - 12x12 shuttle with 25 mph (40 kph) capability; synchro or power shuttle; available hi/low power shift.

**Hydraulics** - Open center; up to 15 gpm (57 lpm) flow dedicated to remote valves and hitch; up to 3 rear remote valves.

**3-point Hitch** - Category 2; up to 8,600 lbs (3900) lift capacity; mechanical or electronic operation.

**PTO** - 540/1000; push button engage; rear fender controls.

**Features** - Large 4-post cab; available air-ride seat; electronic 4wd; 4-wheel braking; available ROPS configuration.



# X1 Series

| Model   | Engine/PTO HP (kW) | Configuration |
|---------|--------------------|---------------|
| X1.25   | 24 (17) / 21 (15)  | 4wd, ROPS     |
| X1.25H  | 24 (17) / 18 (13)  | 4wd, ROPS     |
| X1.35   | 35 (26) / 29 (21)  | 4wd, ROPS     |
| X1.35H  | 35 (26) / 29 (21)  | 4wd, ROPS     |
| X1.45   | 47 (35) / 42 (31)  | 4wd ROPS      |
| X1.45C  | 47 (35) / 42 (31)  | 4wd, Cab      |
| X1.45HC | 47 (35) / 42 (31)  | 4wd, Cab      |
| X1.55HC | 55 (41) / 47 (35)  | 4wd, Cab      |

**Engine** - 3 and 4-cylinder clean diesel engines.

**Transmission** - Economical 6x2 mechanical or easy-to-operate 2-range HST transmission in X1.25; rugged 12x12 shuttle transmission or 3-range HST in X1.35/45/55.

**Hydraulics** - Open center system; up to 11.1 gpm (42 lpm) flow to hitch and implements, depending on model.

**3-point Hitch** - Category 1; up to 3,300 lbs (1500 kg) lift capacity depending on model; mechanical operation.

**PTO** - 540 rear PTO; mid PTO standard on X1.25.

**Features** - Spacious operator's station; high 62-degree steering angle; single piece steel hood; powerful loaders.



## Loaders

| Series   | Application  | Tractors             |
|----------|--------------|----------------------|
| C Series | Compact      | X1                   |
| X Series | Utility      | X4                   |
| L Series | Agricultural | X5, X6, X6L, X7, TTX |

**Design** - Manufactured by Quicke (Alo); heavy duty construction; mechanical self-leveling available on X and L Series models; standard bucket level indicator.

**Loader Attachment** - Simple loader removal without tools; built-in parking stands.

**Tool Attachment** - Universal skid steer quick attachment on C and X Series; popular "Euro-type" quick attachment on X and L Series; easy loader tool change.

**Maintenance** - Bushings at all key pivot points; galvanized pins with recessed grease points for easy access.

**Hydraulics** - Joystick controller mounts near operator; cable-controlled mechanical valves mount to loader sub frame; flat-face quick connect hydraulic couplers.

**Options** - 3rd function capability; soft-ride suspension kit; wide range of interchangeable tools; available options depend on loader model.



# F Series Specialty

| Model   | Engine/PTO HP (kW) | Configuration |
|---------|--------------------|---------------|
| F90 N/V | 83 (61) / 70 (52)  | 4wd, ROPS/Cab |
| F90 F   | 83 (61) / 70 (52)  | 4wd, ROPS/Cab |
| F90 GE  | 83 (61) / 70 (52)  | 4wd, ROPS     |
| F100 F  | 92 (68) / 78 (58)  | 4wd, ROPS/Cab |
| F100 GE | 92 (68) / 78 (58)  | 4wd, ROPS     |
| F110 F  | 102 (76) / 86 (64) | 4wd, ROPS/Cab |
| F110 GE | 102 (76) / 86 (64) | 4wd, ROPS     |

**Engine** - Perkins® 4-cylinder clean-burning diesel engines.

**Transmission** - Choice of mechanical or power shuttle transmission, depending on model.

**Hydraulics** - Hi-flow open center system with multiple options for pump and remote valves.

**Configuration** - Multiple configurations to fit a wide variety of specialty applications.

- F = Standard
- F-N = Narrow
- F-V = Vineyard (narrow and low height)
- F-GE = Low height



## High Clearance

| Model   | Engine/PTO HP (kW) | Configuration   |
|---------|--------------------|-----------------|
| X50.20M | 85 (63) / 70 (52)  | 2/4wd, ROPS/Cab |
| X50.30M | 95 (70) / 80 (59)  | 2/4wd, ROPS/Cab |
| X50.40M | 102 (76) / 87 (64) | 2/4wd, ROPS/Cab |

**Engine** - Perkins® 3.4 liter, 4-cylinder clean diesel; structural block design; turbocharged and intercooled; common rail direct fuel injection; electronic engine management.

**Transmission** - 16x16 shuttle with 4 gears and 4 ranges; mechanical synchro shuttle with creeper standard.

**Hydraulics** - Open center system; separate steering and implement pumps; 13.8 gpm (52 lpm) flow dedicated to remote valves and hitch; up to 4 rear remote valves.

**3-point Hitch** - Category 2; up to 10,450 lbs (4740 kg) lift.

**PTO** - 540/1000 PTO speeds; push button control; easy change shaft.

**Features** - Rear drop-axle with bull-gear type reduction to achieve high ground clearance; open station or 4-post cab with air-ride seat; electronic 4wd; fully locking rear differential, available 2wd front axle.



## **McCormick North America**

2590 Breckinridge Blvd  
Duluth, GA 30096  
(866) 327-6733

McCormick and McCormick Logo are registered trademarks of McCormick International USA, Inc. in the U.S. and/or other countries. International Harvester and Farmall are trademarks of CNH America LLC. © 2015 McCormick International USA, Inc. All rights reserved. The standard and optional equipment, and the availability of individual models, might vary from one country to the next. McCormick International USA, Inc. reserves the right to undertake modifications without prior notice to the design and technical data at all times without this resulting in any obligation whatsoever to make such modifications to equipment already sold. While every effort is made to ensure that the specifications, descriptions, and illustrations in this brochure are correct at the time of printing, these are subject to change without prior notice. Illustrations might show optional equipment, and might not show all standard equipment. MCC03012016

[www.McCormickNA.com](http://www.McCormickNA.com)